

LIFESTYLE INTERIOR COMPONENTS

SIGNATURE 10x12 MODEL

- + INSULATION, FIBERGLASS BATTS
(R15 WALLS, R30 ROOF)
- + BASEBOARD AND DOOR CASING 4"
- + FLOORING, MOHAWK ENGINEERED LAMINATE IN 6 COLORS
- + SEAMLESS DRYWALL CLADDING FOR WALLS AND CEILING
 - + INCLUDED WITH PROFESSIONAL INSTALLATION PURCHASE
- + INTERIOR PAINT, POLAR BEAR WHITE
 - + TEXTURE NOT INCLUDED
- + ELECTRICAL PACKAGE (SEE PAGE 2)
- + HEATING & COOLING (SEE PAGE 2)
 - + OPTIONAL UPGRADE, LOCALLY SOURCED
- + ELECTRICAL SCHEMATIC (SEE PAGE 3)
- + TECHNICAL SPECIFICATIONS (SEE PAGE 4)



| LIFESTYLE INTERIOR CHECKLIST | Shell Only | Lifestyle™ DIY | Lifestyle™ Professional Install |
|------------------------------------------------------------------------------------------------------|------------|----------------|---------------------------------|
| R15 Wall Insulation and R30 Roof Insulation | | ✓ | ✓ |
| Electrical Package – Interior/Outdoor Lighting, Necessary Wiring, Junction Box, Outlets and Switches | | ✓ | ✓ |
| Door Casing, Baseboard, and Interior Paint | | ✓ | ✓ |
| Main Flooring – Mohawk Engineered Laminate, Floating Tongue and Groove | | ✓ | ✓ |
| Seamless Interior Wall Cladding (Level 3-4 Smooth Finish Drywall) | | | ✓ |

LIFESTYLE ELECTRICAL PACKAGE

SIGNATURE 10x12 MODEL

- + OUTLETS
- + WALL SWITCHES
- + GFCI EXTERIOR OUTLET
- + SUBPANEL



LIGHTING FIXTURES

- + RECESSED CAN LIGHTING
- + EXTERIOR LANTERN LIGHTS
 - + BRONZE & NICKEL FINISHES



| Electrical Pack Components | Quantity |
|-----------------------------------------|----------|
| Dimmer Switch | 1 |
| 15 amp Switches | 1 |
| 20 amp TR Duplex Receptacle | 5 |
| Panel Grounding Bar | 1 |
| 125 amp Subpanel | 1 |
| NM Connectors 3/8" | 14 |
| NM Connectors 3/4" | 2 |
| Nylon Single Plate | 5 |
| Nylon Duplex Plate (Double) | 1 |
| 4" LED White Recessed Downlight | 4 |
| 1 Pole 20 amp GFCI/AFCI Circuit Breaker | 2 |
| 1 Pole 15 amp AFCI Circuit Breaker | 1 |
| Single Work Box (Blue) | 5 |
| Double Work Box (Blue) | 1 |
| Exterior Lights | 2 |
| Exterior Light Mounting Box | 2 |
| 12-2 Wiring (Yellow) | 132 |
| 14-2 Wiring (White) | 120 |
| Weatherproof Galv. Ext Box | 1 |
| Weatherproof GFCI 20 amp Outlet | 1 |
| Weatherproof Plastic Cover | 1 |

HEATING & COOLING

MRCOOL DIY DUCTLESS MINI-SPLIT

- + ENERGY STAR
- + SMARTPHONE APP
- + REMOTE WITH FOLLOW ME FUNCTION
- + LOUVER POSITION MEMORY
- + DIGITAL ASSISTANT READY
 - + GOOGLE ASSISTANT
 - + AMAZON ALEXA
- + SMARTPHONE APP
- + CORROSION RESISTANT CONDENSER FOR LONG LASTING PERFORMANCE IN COASTAL LOCATIONS
- + CIRCUIT BREAKER NOT INCLUDED

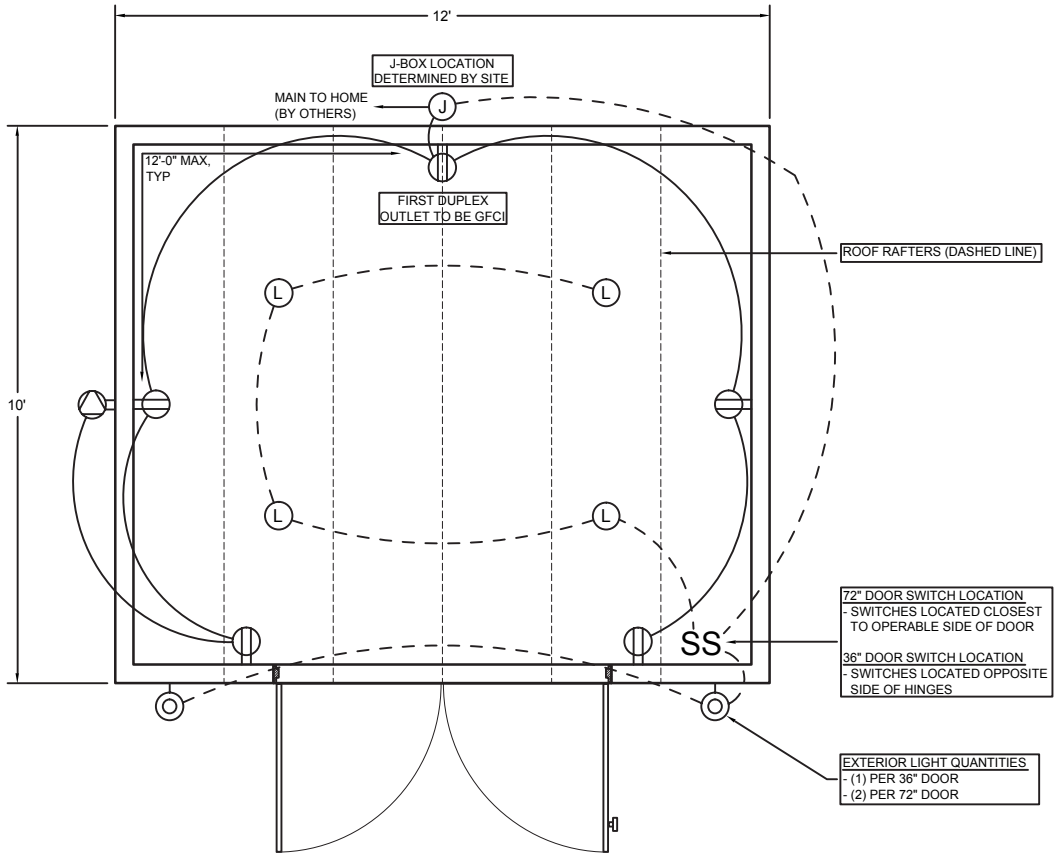
HVAC SOLUTION



MRCOOL DUCTLESS MINI-SPLIT
NOT INCLUDED – LOCALLY SOURCED



LIFESTYLE ELECTRICAL SCHEMATIC



ELECTRICAL LAYOUT - SIGNATURE 10x12 MODEL

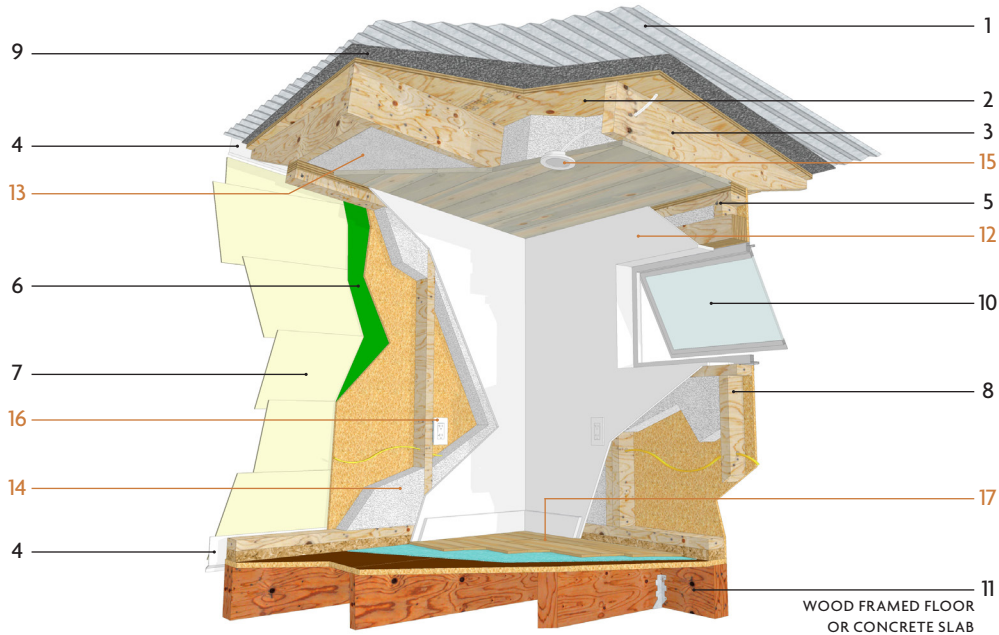
| | | | | | | | |
|--------------------------------|--------|--|--------|-------------------------------------------|-------------|--|--------|
| J SUB-PANEL | QTY: 1 | | QTY: 5 | L RECESSED 3" LED WITH CANISTER | QTY: 4 | | QTY: 1 |
| S SINGLE-POLE SWITCH | QTY: 2 | | QTY: 1 | | QTY: VARIES | | |

*Typical layout shown with centered 72" door. Component and wiring layout varies by door(s) type, door(s) location, door(s) quantities and Vistalite window placement. Recommended bulbs: 160 Watts - (4) 10w CFL.

| | |
|-------------------------------------------------------------------------------------------------------------------------------------------------------------------------------------------------------------------------------------------------------------------|-------------------------------------------------------------------------------------------------------------------------------------------------------------------------------------------------------------------------------------------------------------|
| <p>ELECTRICAL GENERAL NOTES:</p> <ol style="list-style-type: none"> TO RUN WIRING BETWEEN PANELS, DRILL (1) 1/2" Ø HOLE THROUGH STUDS AT 12" O.C. FROM B.O. SILL PLATE JUNCTION BOX INSTALLED AT 4'-6" FROM B.O. PANEL TO B.O. BOX | <ol style="list-style-type: none"> OUTLETS INSTALLED 12" A.F.F. TO BOTTOM OF BOX EXTERIOR LIGHTS INSTALLED 6'-4" AFF TO MOUNTING HOLE 20 AMP AFCI/GFCI CIRCUIT BREAKER IS PROVIDED TO TAKE PLACE OF NEEDED GFCI RECEPTACLE |
|-------------------------------------------------------------------------------------------------------------------------------------------------------------------------------------------------------------------------------------------------------------------|-------------------------------------------------------------------------------------------------------------------------------------------------------------------------------------------------------------------------------------------------------------|

SIGNATURE SERIES PRODUCT GUIDE

TECHNICAL SPECIFICATIONS



STANDARD FEATURES:

- 1) GALVALUME OR PAINTED CORRUGATED METAL ROOF
- 2) PLYWOOD ROOF SHEATHING
- 3) 2x RAFTERS AND BLOCKING
- 4) CUSTOM MANUFACTURED ALUMINUM FLASHING AND TRIM
- 5) SIMPSON STRONG-TIE® TIE-DOWNS AT ALL RAFTER CONNECTIONS
- 6) ZIP SYSTEM® WALL SHEATHING WITH INTEGRATED WATER-RESISTIVE BARRIER
- 7) FIBER CEMENT SIDING OR ENGINEERED CEDAR
- 8) FIR AND ENGINEERED WOOD WALL FRAMING
- 9) ROOFING FELT (BY INSTALLER OR CUSTOMER)
- 10) ENERGY EFFICIENT DUAL PANE, LOW-E FIBERGLASS WINDOWS

FOUNDATION OPTIONS:

- 11) FOUNDATION OPTIONS LOCALLY SOURCED: WOOD FRAMED FLOOR WITH CONCRETE PILES OR CONCRETE MONO SLAB

LIFESTYLE PACKAGE:

- 12) SEAMLESS DRYWALL INTERIOR
- 13) FIBERGLASS BATTS ROOF INSULATION
 - R-21 (2x6 RAFTERS)
 - R-30 (2x8 AND 2x10 RAFTERS)
- 14) FIBERGLASS BATTS WALL INSULATION
 - R-15
 - R-21
- 15) 4" INTERIOR RECESSED LIGHT FIXTURES
 - LED (600 LUMENS)
- 16) ELECTRICAL PACKAGE
 - EXTERIOR MOUNTED JUNCTION BOX WITH 15 AND 20 AMP BREAKERS
 - DUPLEX WALL OUTLET, DUPLEX GFCI OUTLET AND EXTERIOR DUPLEX OUTLET
 - LIGHT SWITCHES
 - EXTERIOR LIGHT FIXTURE(S)
- 17) FINISHED FLOORING OPTIONS
 - ENGINEERED LAMINATE WITH UNDERLAYMENT AND MOISTURE BARRIER